

LIMIT & SAFETY SWITCHES

30mm Wide Limit Switches

- 30mm width
- IP65 double insulated plastic
- IP66 metal casing
- Snap action contacts
- approved

CE 10

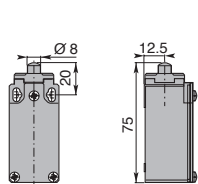


SPECIFICATION

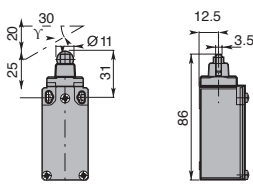
Rating	500V
Shock withstand	50g
Impulse withstand voltage	6kV
Working temperature	-25°C to +70°C
Switching frequency	3600 cycles/h
Load factor	0.5
Short circuit protection	10A gG fuse

IP66 METAL CASING	IP65 PLASTIC CASING	PLUNGER TYPE	MAX ACTUATION SPEED	ACTUATION/ NC OPERATION
CE10.00.AM	CE10.00.AP	Plain Plunger	0.5ms ⁻¹	15N/30N
CE10.00.BM	CE10.00.BP	Roller Plunger	0.3ms ⁻¹	12N/30N
CE10.00.GM	CE10.00.GP	Adjustable Rod Lever	1.5ms ⁻¹	0.10Nm/0.32Nm
CE10.00.HM	CE10.00.HP	Adjustable Rod Lever	1.3ms ⁻¹	0.10Nm/0.32Nm
CE10.00.EM	CE10.00.EP	Roller Lever Nylon	1.5ms ⁻¹	0.10Nm/0.32Nm
CE10.00.EM/50	CE10.00.EP/50	Rubber Roller Lever	1.5ms ⁻¹	0.10Nm/0.32Nm
CE10.00.FM	CE10.00.FP	Adjustable Roller Lever	1.5ms ⁻¹	0.10Nm/0.32Nm
CE10.00.FM/50	CE10.00.FP/50	Adjustable Rubber Roller Lever	1.5ms ⁻¹	0.10Nm/0.32Nm
CE10.00.IM	CE10.00.IP	Nylon Roller Lever	1.5ms ⁻¹	0.10Nm/0.32Nm
CE10.00.FRM/50	CE10.00.FRP/50	Adjustable Lever Adjustable Roller	1.5ms ⁻¹	0.10Nm/-
CE10.00.HLTM	CE10.00.HLTP	Nylon Actuator, Stainless Steel Spring	1.5ms ⁻¹	0.10Nm/0.32Nm

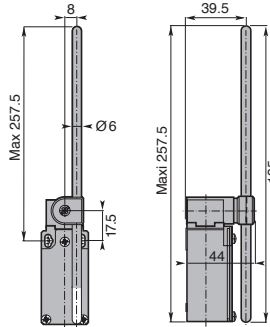
Plain Plunger



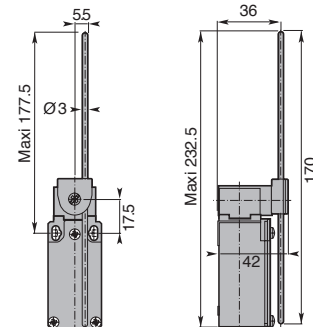
Steel Plunger



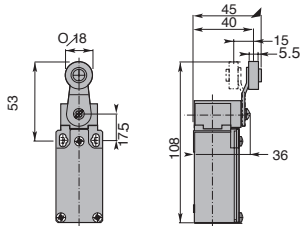
Adjustable Rod Lever



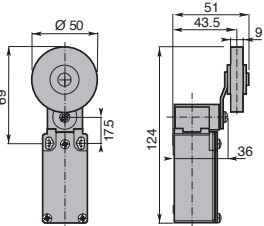
Adjustable Rod Lever



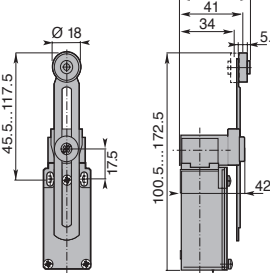
Roller Lever Nylon



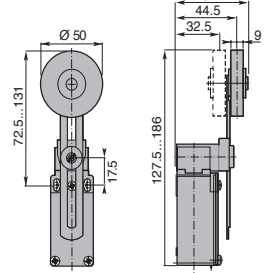
Rubber Roller Lever



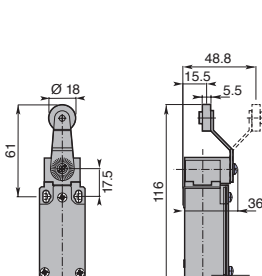
Adjustable Roller Lever



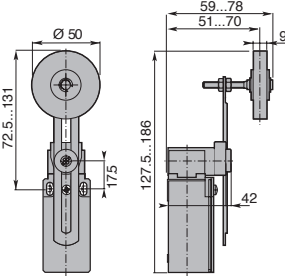
Adjustable Rubber Roller Lever



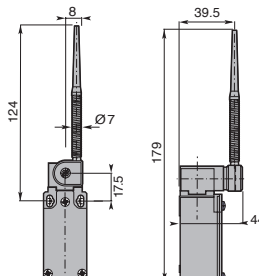
Nylon Roller Lever



Adjustable Lever Adjustable Roller



Nylon Actuator, Stainless Steel Spring



+44 (0)1638 716101
info@camdenboss.com
www.camdenboss.com

We operate a constant improvement policy,
our products are subject to change without notice.

CAMDENBOSS
ELECTRONICS & ENCLOSURES